

Perlis

Early Detection of Frailty
& Elderly Diseases

Gil

A 19 year old
grandson

**Who will win
the game?**

Mr. Smith

A 82 year old
grandfather



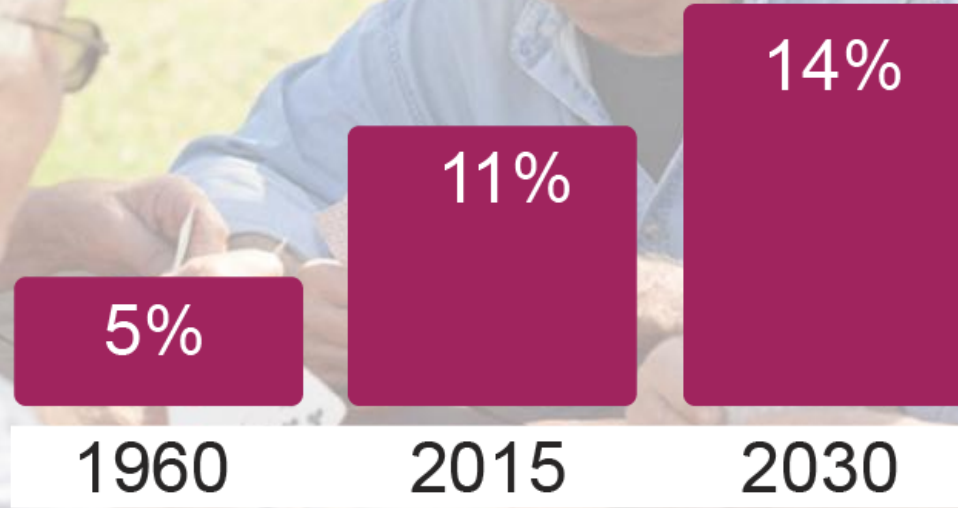
Perlis

Early Detection of Frailty
& Elderly Diseases



The Challenge

Elders in the Population



UN Statistical dep.

Facts about frailty and elderly diseases

- Each elder will suffer from loss of muscle and bone mass. 30% of them will be a burden on the National Social System – *“Frailty syndrome report”*
- Alzheimer's economic burden in the U.S 14.4 B per year – *“NIH”*
- 60,000 Americans are diagnosed with Parkinson each year, which reflect income lost in the U.S per year of 25B\$ social payment – *“ Parkinson statistic report”*
- 30% of elderly death cases caused by depression – *“NIH”*
- Market size in the US: \$30-40B – *Laurie Orlev 2015 rep.*
- Market size worldwide: \$300B – *Freedonia 2015 rep.*

Cost of Healthcare Per Day



National Institute of Health

Perlis

Early Detection of Frailty
& Elderly Diseases



The Solution

About Perlis

Perlis is a cutting edge company specializes in sophisticated detection systems for the elder community. We provide care givers a unique patented tool which will allow decision makers to monitor, identify and treat symptoms of most common elder diseases at their very early stage.

Our system actually enables the elder population to continue grow old in their favorite environment while preserving independency and vitality.

Optimal Aging- Personal Healthcare

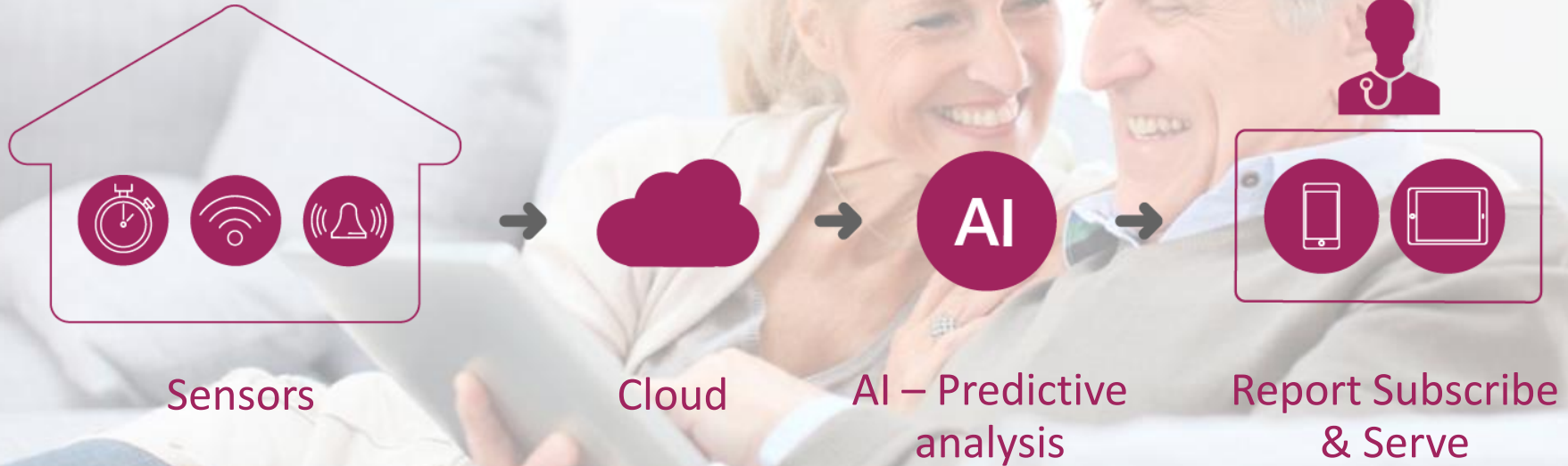


PPC – Personal Predictive Care

Perlis

Early Detection of Frailty
& Elderly Diseases

The System



4 layers Technology



Smart Home



Telemedicine
Communication



Medical Devices



Big Data Cloud



IoT
Internet of
Things



Activity
Recognition
and behavior
patterns



Robotic
Intelligence



Decision
making upon
changes

Perlis

Early Detection of Frailty
& Elderly Diseases

Practical Model



The Team



Reuven Granot PhD

Expert in Robotics and AI. systems, Professor in Haifa and Bar-Ilan Universities. Senior positions in in Israeli Ministry of Defense.



Eliran Polak - CEO

MBA, 17 years of senior managerial positions in multi national and national firms specialized in medical devices field.



Dr. Marian Moskovich – Medical Director - MD Cardiology, intern, trauma and geriatric. Head of Trauma dep in Rambam hospital ,Head of northern geriatric district of Clalit health fund, Senior consultant in Geriatric medicine.



Yossi Dekel

B.A degree in Social Sciences and Mathematics from the University of Haifa, a CLU (Isr.) degree from The American College of financial services. VP at Bank Hapo'alim and The Phoenix Insurance company.



Ehud Moradov – COO

Mobile Internet and Com Graduation from Bar Ilan university and startups Expert.

Perlis

Early Detection of Frailty
& Elderly Diseases



Business Model

Perlis

Early Detection of Frailty
& Elderly Diseases

Competitors & Competitive Strength

Analysis based on data flow profiling

Analysis based on statistic data

Perlis

Elderly Situations
Detection System

 Healthsense®

 care innovations
an Intel•GE company

 ALARM.COM™

 QUALCOMM®

 PHILIPS
Healthcare

 grandCARE™

 sensara

Users & Customers

- Individuals
- Nursing homes
- Health funds
- Insurance companies
- Governmental organizations
- Ministry of Health



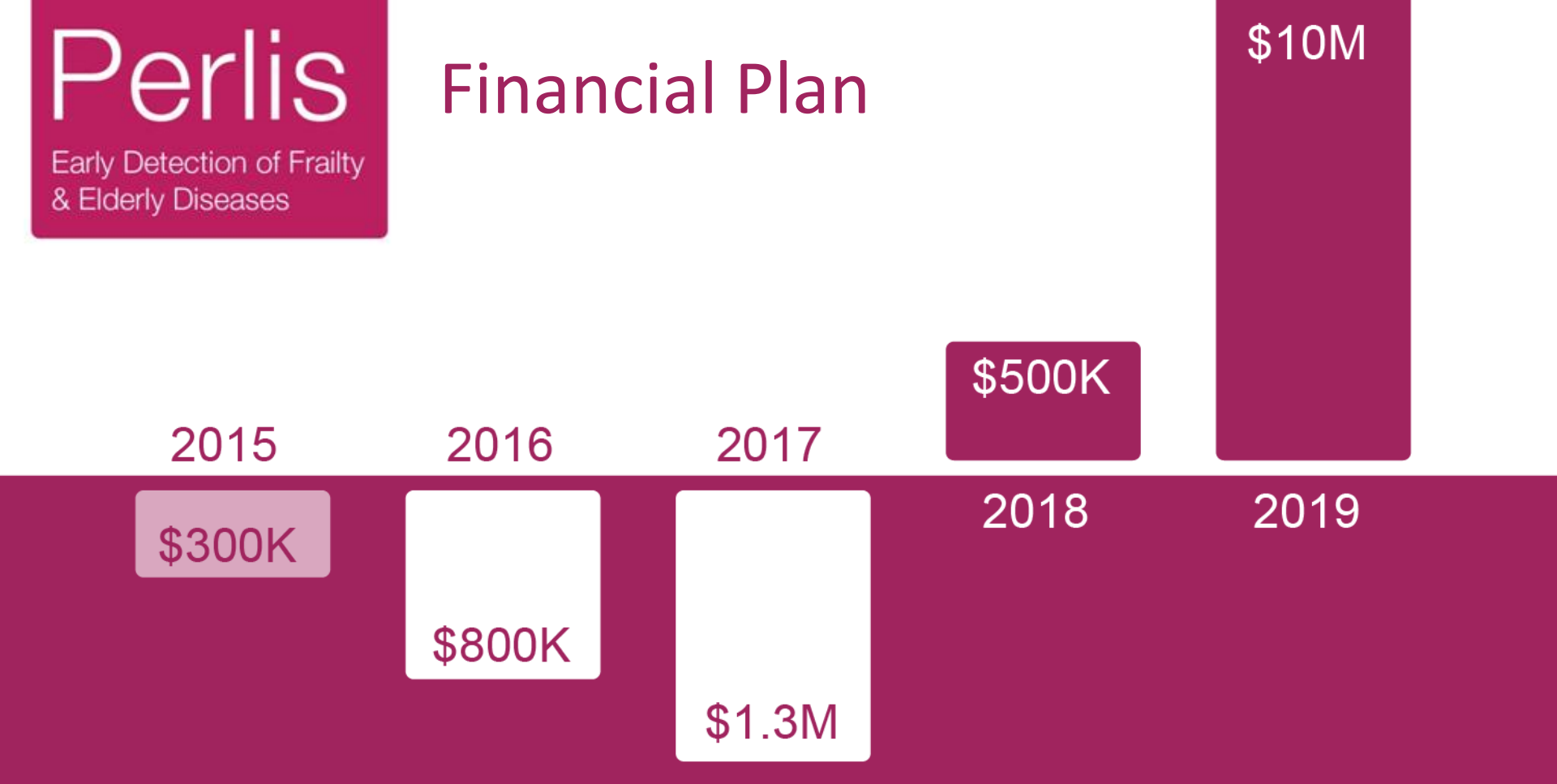
We currently seek

2M\$ for the next 2 years to be utilized for:

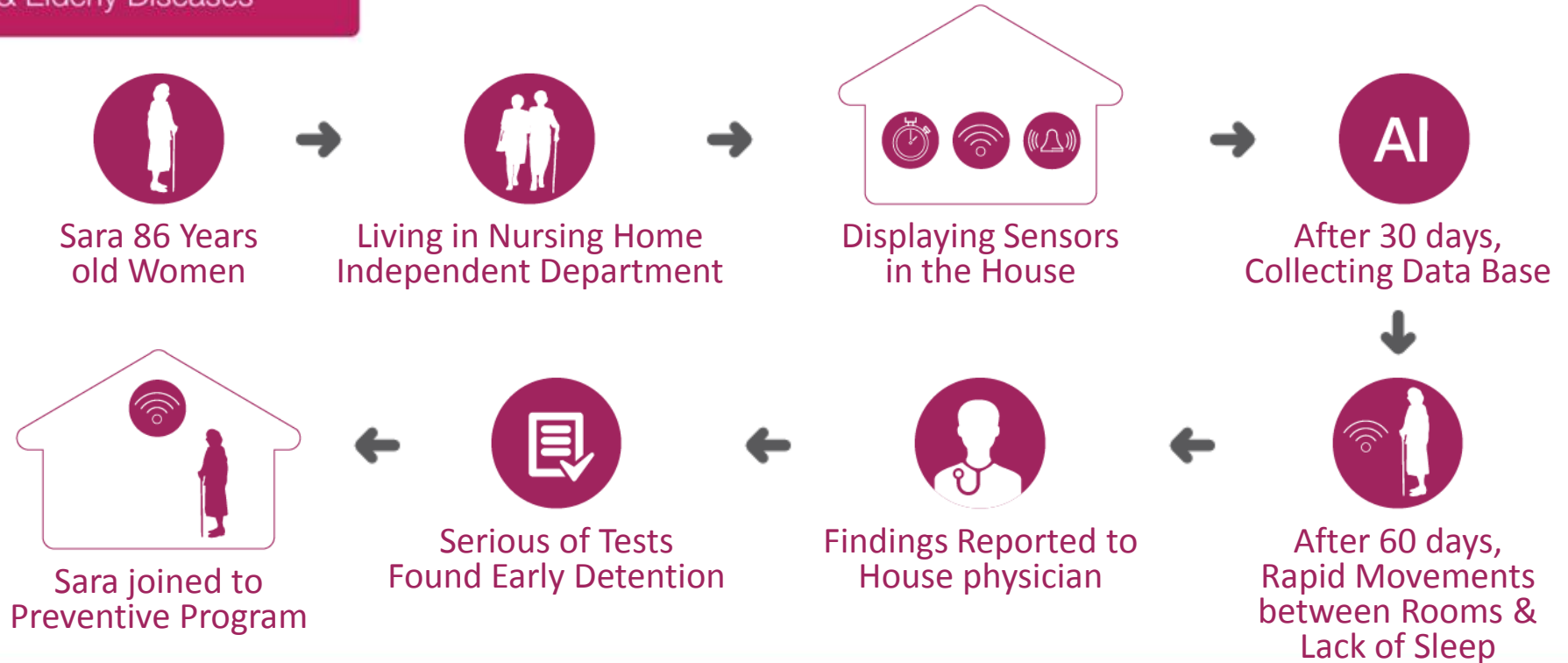
- Improving telecommunication and system integration
- Algorithm development
- Clinical trails
- Marketing and business development

ROI for the investor will be anticipated in 2 years time

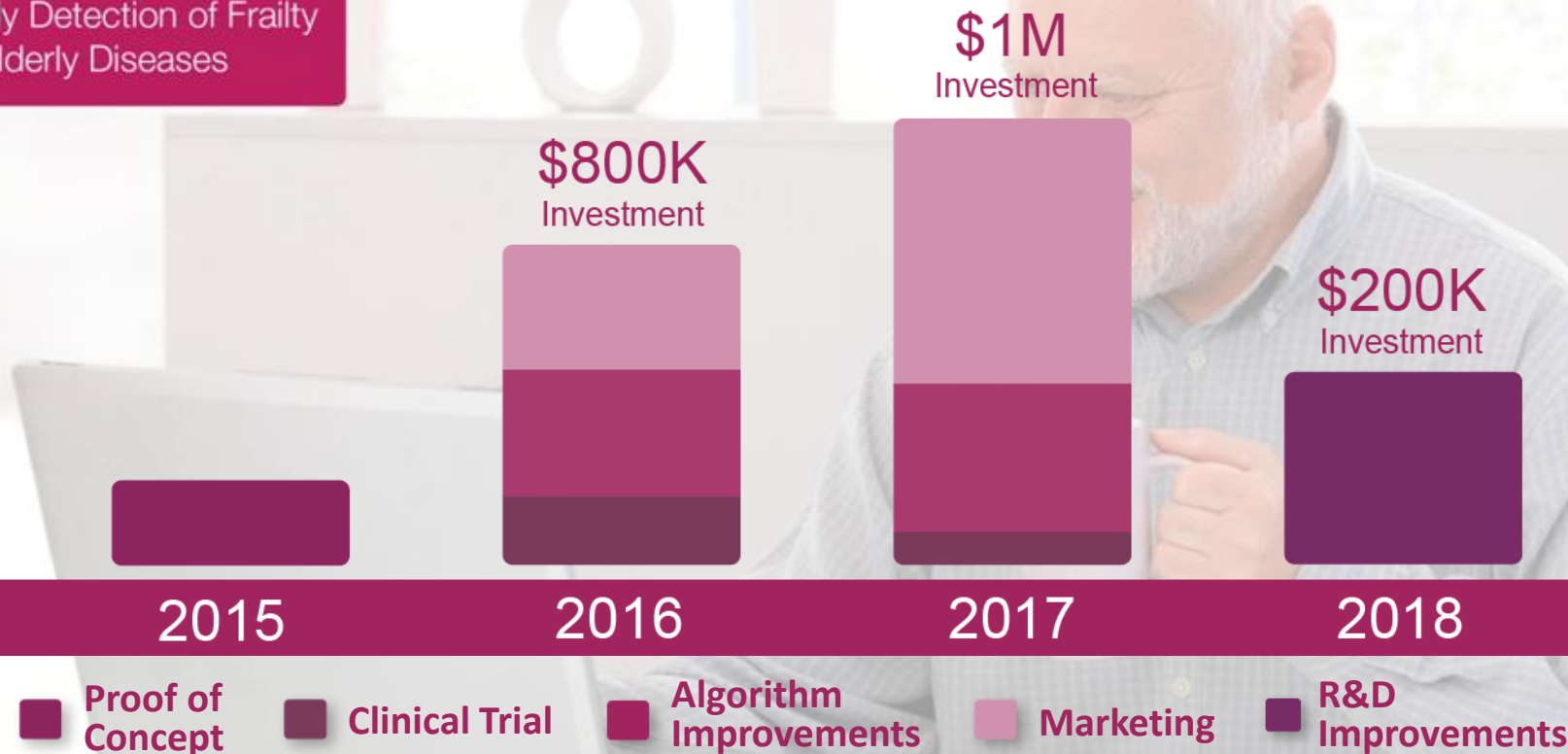
Financial Plan



Case Study



Investment Mile Stones



Perlis

Early Detection of Frailty
& Elderly Diseases

Who won
the game?
Both of them!

Perlis

Early Detection of Frailty
& Elderly Diseases

A photograph of a young man and an elderly man sitting together. The young man, on the left, is wearing a red and blue plaid shirt and is smiling broadly, holding the elderly man's hand. The elderly man, on the right, is wearing a blue and white plaid shirt and is also smiling. They are both sitting on a light-colored surface, possibly a couch or bed, with a white curtain in the background.

Thank you for your attention